

# **The National**

# **Methamphetamine Symposium**

*Making Research Work in Practice*

*12 May 2015 | Arts Centre, Melbourne*

## **National Ice Action Strategy**

**Richard Murray**



# National Ice Action Strategy

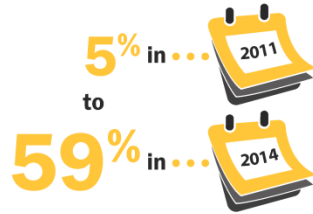
**National Ice Taskforce**

*May 2015*

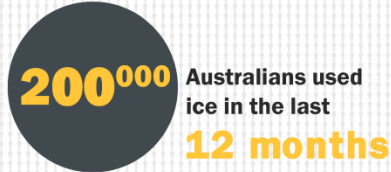
*Professor  
Richard Murray*

# Crystalline methamphetamine hydrochloride (ice) is a growing problem

Of detected illicit drug imports to Australia, ice has grown from



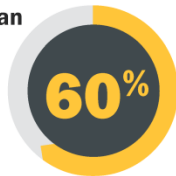
About



Long-term use of ice can cause mental health problems including **psychotic episodes**

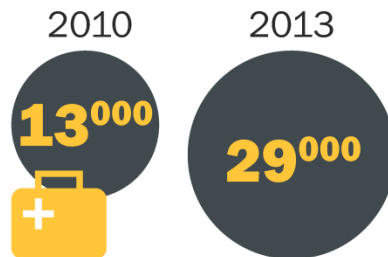


More than



of Australia's most significant organised criminal groups are involved in the methylamphetamine market

Since 2010, the number of people receiving treatment for meth/amphetamine issues has **MORE THAN DOUBLED**



Compared to 2010 more than **TWICE THE NUMBER** of meth/amphetamine users reported using ice in 2013



More than **1 in 14** Australians have tried meth/amphetamine



Australian Government  
National Ice Taskforce

## The Australian Government has established a National Ice Taskforce

The Prime Minister announced the Taskforce on 8 April 2015.

There are **three members** on the Taskforce:

- Chaired by Ken Lay APM
- Dr Sally McCarthy
- Professor Richard Murray

The Strategy is being developed with the State and Territory governments in a **two-pass process**:

1. Interim Report in July
2. Final Strategy by the end of the year.

The Strategy will be agreed to by the Council of Australian Governments

The Taskforce is reporting to **two federal ministers**:

- Senator the Hon Fiona Nash, Assistant Minister for Health
- the Hon Michael Keenan MP, Minister for Justice

The Taskforce is being assisted by a multi-agency secretariat that is working closely with State and Territory public services. 4

## The National Ice Taskforce will be engaging in targeted and community consultations

The Taskforce will be **visiting communities** in every state and territory to hear from local leaders and experts:

- Mount Gambier, SA
- Newcastle, NSW
- Darwin, NT
- Mildura, Vic
- more locations being settled

Targeted consultations and **roundtables with expert groups** are also being held:

- Peak bodies representing alcohol and other drug services
- Peak bodies responsible for training, educating and/or representing health professionals
- more consultations being settled

The Taskforce is also seeking **views from the public** via its website

## BOX 5.1 SUMMARY OF THE TEN STEPS TO SYSTEMS THINKING FOR HEALTH SYSTEMS STRENGTHENING

### I. Intervention Design

1. Convene stakeholders
2. Collectively brainstorm
3. Conceptualize effects
4. Adapt and redesign

### II. Evaluation Design

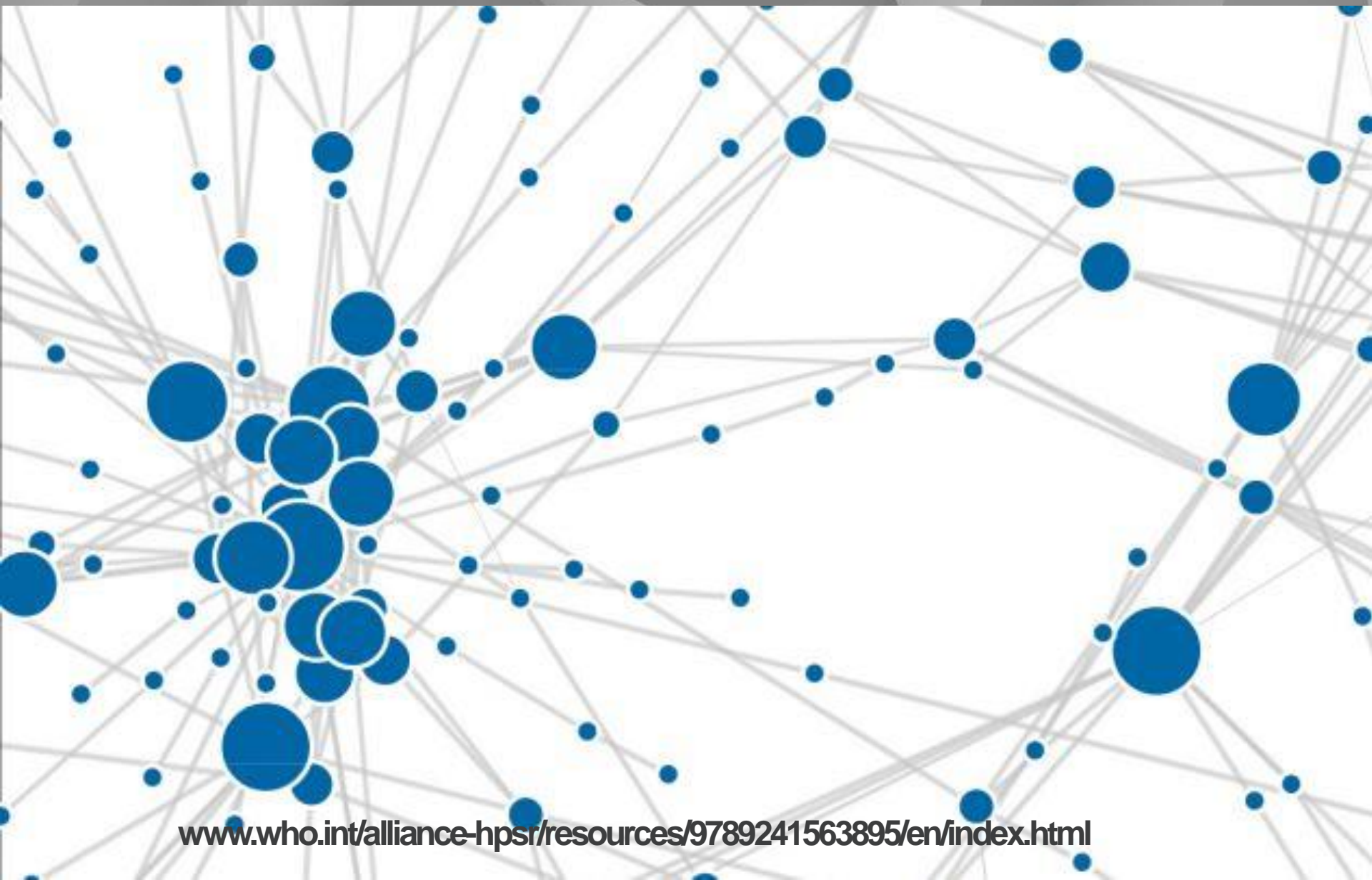
5. Determine indicators
6. Choose methods
7. Select design
8. Develop plan
9. Set budget
10. Source funding.

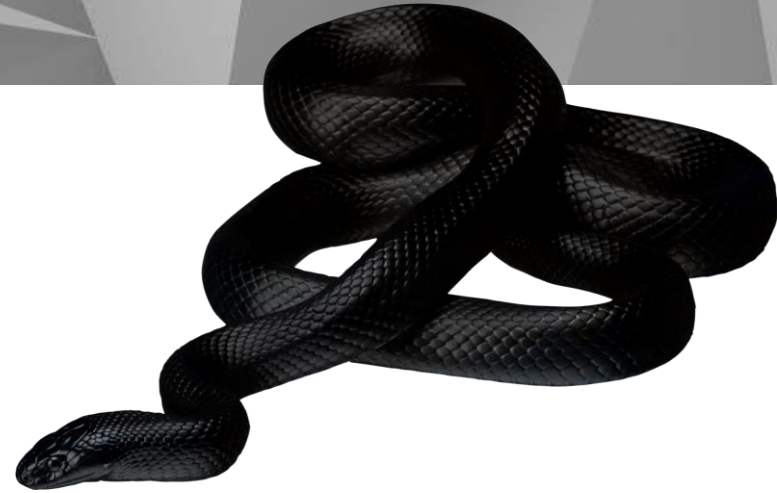




# National Ice Action Strategy

## National Ice Taskforce





- Building confidence & skills *vs* mobilising support *vs* privileging one substance
- Services coordination *vs* sectoral & professional identity *vs* funding streams
- Resource contestability *vs* collaboration
- Law enforcement *vs* help-seeking behaviours



## How can national whole-of-government approach add value?

- How to best **support the local** – mobilising health & social services, law enforcement, community leaders, users, ex-users, families *in the local context*
- **Information** – applying and making evidence available, priority research gaps
- **Technologies** – telehealth, surveillance, targetting
- **Coordination** – governments, health and helping agencies, law enforcement, employers, grass-roots activities, peer educators
- **Service design** – ‘systems of care’
- *Other?*

**You are welcome to contribute:**

*<https://www.dpmc.gov.au/taskforces/national-ice-taskforce>*